

Replicate settings from a working IS1701 to a new IS1701

The following instructions show to to:

- Copy the .HTM, .JAR, .JOB and .SET from a working reader and write these files to a new reader.

The purposes of each file type are:

- .HTML files - Web interface instructions
 - .SET files - General device configurations.
 - .JOB and .JAR files - specify the functions of the reader in image processing jobs and OCR.
-

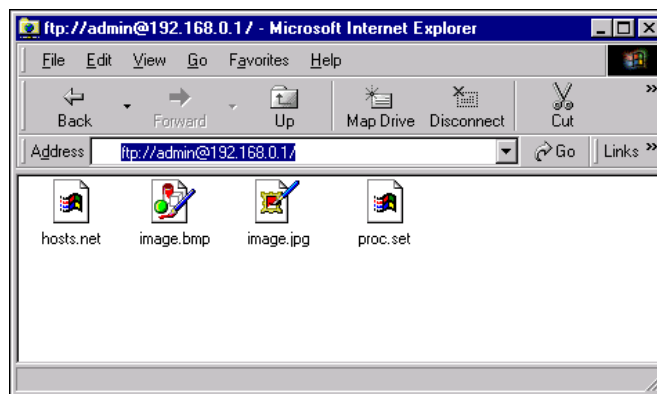
To copy files using a web browser

- Open an FTP session and login to the working reader by typing **ftp://** followed by the reader's IP Address into the browser's Address bar (for example, ftp://192.168.0.1). A Login dialog appears.



FTP login

- In the Login dialog, enter the admin username the reader uses, or the default User Name: **admin**, with password blank, then click **OK** to login.
- If the FTP login to the 1701 is successful, all of the files currently installed in In-Sight flash memory are displayed in the browser window.



Copy and save files

- Copy the .HTM, .JAR, .JOB and .SET files.
- You can save them in the In-Sight install directory the In-Sight PC Host (C:\InSight2\1701 by default). Make a new folder for these files if you want to save a version

Add files to the new reader

- Connect to the new reader by the same FTP method as described before, using FTP and the IP address of the new reader. The login name should be admin, with no password.
 - Write these files to the new reader by copy and paste or drag and drop.
-

Login with HTTP and Java and load a job

- Login to the new reader via HTTP by typing http:// and the reader's IP address into the address bar of Internet Explorer.
- When you connect for the first time, load the .job file it should use by clicking the "File" tab , selecting the .job file, and clicking "open". If you don't have a job you'd like to use, choose the default job file, called WafID00.job.

